



**Jo Owen**  
082 099 2654  
jo.owen@seeff.com



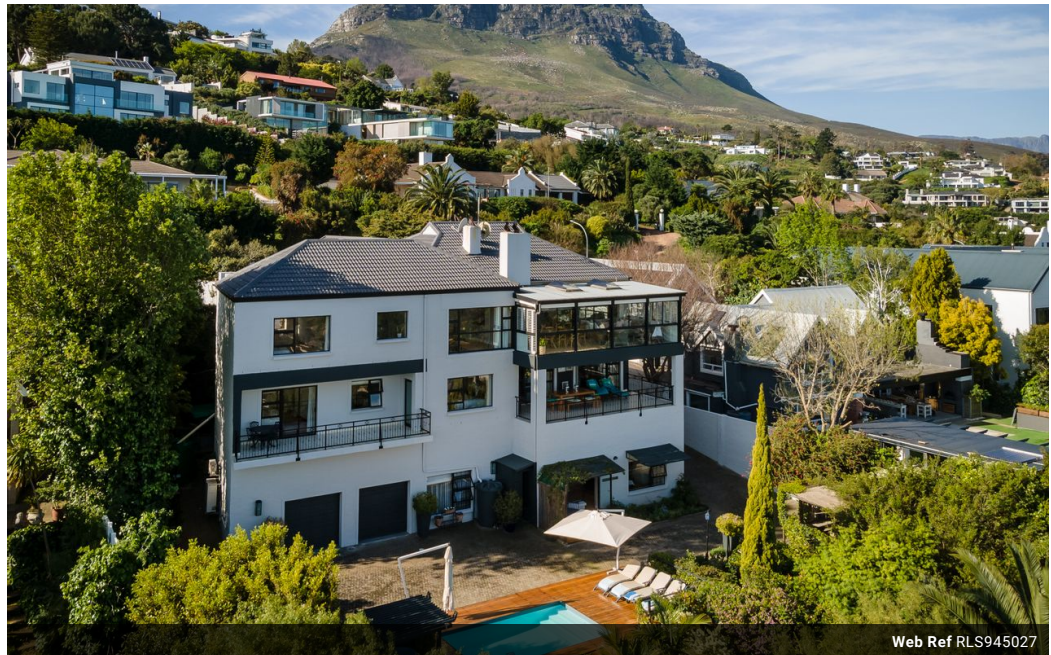
**Wanda Fairweather**  
Candidate Property Practitioner  
Registered with PPRA  
(FFC 202 371 519 77)

082 657 3730  
wanda.fairweather@seeff.com

Contact Somerset West

+27 021 851 4141

163 Main Road  
Somerset West  
7130



Web Ref RLS945027



### R20,000,000

6 7 4

**Monthly Bond Repayment** R206,437.68  
Calculated over 20 years at 11% with no deposit.

**Transfer Costs** R2,272,371.00 **Bond Costs** R132,285.00  
These calculations are only a guide. Please ask your conveyancer for exact calculations.

**Monthly Rates** R4,906

### A High End Furnished Luxury Residence of 3 Units

**EXCLUSIVE SOLE MANDATE** - Nestled in one of the most prestigious suburbs in Somerset West is an unparalleled luxury property with dramatic panoramic views that stretch across False Bay and the Hottentots mountain range.

This spectacular home is not just about the breathtaking views and luxurious living; it's also about convenience and the move-in ready elegance. The property is being offered with all the beautiful furniture, fixtures, fittings, appliances and home elements included, meticulously curated to complement the home's aesthetic.

If you are searching for inspiration, this is it. The property provides the perfect blend of privacy, accessibility, luxury, dual living (or an extra income) and lifestyle – ready to be moved into without any hassle.

The property is spread over 3 levels:

Level 1 is the heart of the home...

### Features

**Pets Allowed** Yes

#### Interior

Bedrooms 6  
Bathrooms 7  
Kitchens 3  
Recep. Rooms 6  
Furnished Yes

#### Exterior

Garages 4  
Carports / Parkings 6  
Security Yes  
Pool Yes  
Views True

#### Sizes

Floor Size 620m<sup>2</sup>  
Land Size 1,206m<sup>2</sup>

#### Extras

Entrance Hall Fireplace Air Conditioner Scullery Storeroom Pantry Patio Satellite Dish

