



Elmarie Du Toit
082 898 0185
elmarie.dutoit@seeff.com

Contact Somerset West

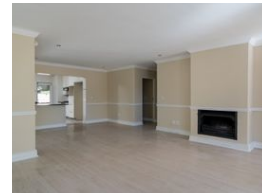
+27 021 851 4141

163 Main Road
Somerset West
7130



SOLE MANDATE

Web Ref RLS976635



R5,400,000

3 3 2

Monthly Bond Repayment R55,738.17
Calculated over 20 years at 11% with no deposit.

Transfer Costs R451,807.00 **Bond Costs** R65,785.00
These calculations are only a guide. Please ask your conveyancer for exact calculations.

Monthly Levy R1,826 **Monthly Rates** R1,750

Pepperwood - 3 Bedroom stunner

EXCLUSIVE SOLE MANDATE: The sought after exclusive Pepperwood Country Estate offers this beautiful 3 bedroom, 3 bathroom home. Immaculate and perfect for a family wanting secure estate living.

As you enter the home you are welcomed by a large living dining room space, perfectly planned around the open plan kitchen. Fireplace provides warmth in winter and air-conditioner takes care of warm summer days. Two patios opening off the living space. Large bedroom downstairs with bathroom. Storeroom under stair case.

Moving up the stairs - large landing with loads of built in cupboards, 2nd bedroom with bathroom and main bedroom with dressing room and stunning, modern his and hers en-suite full bathroom. Aircon in main bedroom.

The large family room upstairs opens up onto the balcony with built in braai. The views are...

Features

Pets Allowed Yes

Interior

Bedrooms	3
Bathrooms	3
Kitchens	1
Recep. Rooms	3
Furnished	No

Exterior

Garages	2
Carports / Parkings	2
Security	Yes
Pool	No
Views	False

Sizes

Floor Size	292m ²
Land Size	447m ²

Extras

Security Estate Fireplace Air Conditioner Patio Storeroom Balcony Built In Braai Mountain View Irrigation System

