



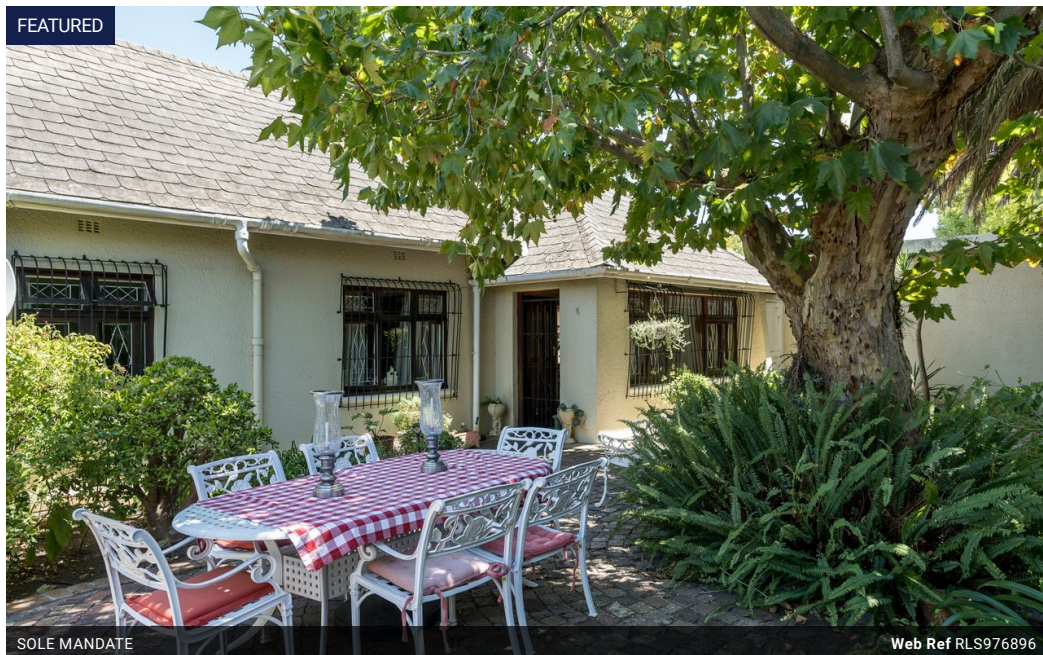
Tony Rickelton
082 498 0688
tony.rickelton@seeff.com

Contact Somerset West

+27 021 851 4141

163 Main Road
Somerset West
7130

FEATURED



SOLE MANDATE

Web Ref RLS976896



R4,395,000

Monthly Bond Repayment R45,364.68

Calculated over 20 years at 11% with no deposit.

Transfer Costs R329,291.00 **Bond Costs** R55,380.00

These calculations are only a guide. Please ask your conveyancer for exact calculations.

Monthly Rates R1,500

4 3.5 2

Come view this cozy gem, perfectly priced and nestled on a corner stand in sought-after Stuarts Hill

Step inside and feel the warmth and charm of this well-loved family home. The large entrance hall welcomes and leads you to a spacious sitting room with a closed-combustion fireplace—perfect for those chilly winter evenings. Adjacent is a TV lounge and sitting area opening into a beautiful, landscaped garden and entertainment space.

The well-proportioned dining room is ideal for entertaining and gourmet meals. It features a small open fireplace and opens to a covered patio overlooking a secluded garden, perfect for sundowners or alfresco lunches.

The vast kitchen is a chef's delight with a five-plate Whirlpool gas hob and an AEG eye-level oven. There's ample cupboard and counter space, a double wash basin, and room for two single fridges. Just outside the kitchen door, you'll find a large pantry and storeroom lined with...

Features

Pets Allowed Yes

Interior

Bedrooms	4
Bathrooms	3.5
Kitchens	1
Recep. Rooms	2
Furnished	No

Exterior

Garages	2
Carports / Parkings	3
Security	Yes
Pool	No
Views	False

Sizes

Floor Size	202m ²
Land Size	871m ²

Extras

Entrance Hall Fireplace Laundry Pantry Storeroom Guest Toilet Patio Built In Bar Alarm System Burglar Bars Security Gate

